

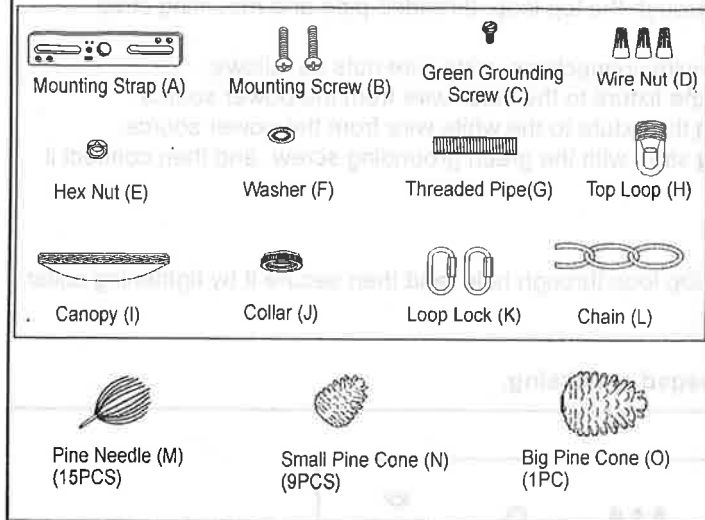
ASSEMBLY AND INSTALLATION INSTRUCTIONS

H0170

WARNING: TO AVOID RISK OF ELECTRICAL SHOCK, BE SURE TO SHUT OFF POWER BEFORE INSTALLING OR SERVICING THIS FIXTURE.

NOTES: 1. Before installing, consult local electrical codes for wiring and grounding requirements.
2. READ AND SAVE THESE INSTRUCTIONS.

Hardware Package (included):



Installation Steps

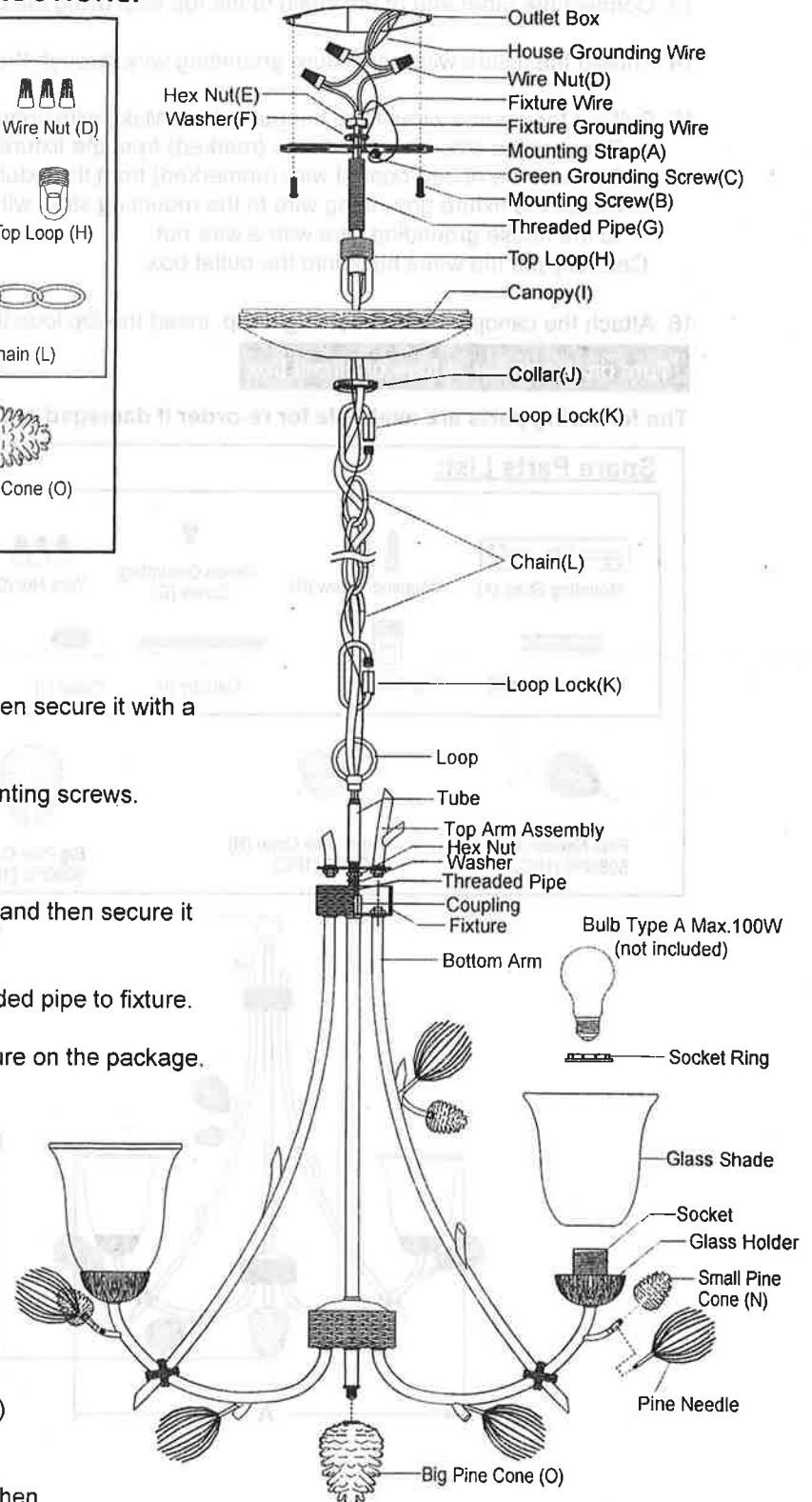
Turn off the power at fuse or circuit box

1. Attach threaded pipe to the mounting strap, and then secure it with a washer and a hex nut.
2. Attach mounting strap to outlet box using two mounting screws.
3. Secure the top loop to the threaded pipe.
4. Screw the threaded pipe to the coupling of fixture, and then secure it with a washer and a hex nut.
5. Slip the top arm assembly down through the threaded pipe to fixture.
6. Adjust the arms of the fixture according to the picture on the package.

Important:

- a. The bottom arms should be positioned with equal distances between them.
- b. The bottom arms should be fixed securely.
- c. Each top arm is supposed to be aligned with the corresponding bottom arm.

7. Slip the tube down through the threaded pipe, and then secure it with loop.
8. Secure the pine cones (O, N) and pine needles (M) onto the fixture as shown in graph.
9. Attach the glass shades to the glass holders, and then secure them with the socket rings.



10. Install bulbs (not included). Check relamping label at socket area or packaging for maximum allowed wattage.
11. Connect the chain:
 - Determine needed length of chain to achieve desired fixture height. (To remove excess chain section, use pliers to bend link open.)
 - Weave the fixture wires through the chain, collar and canopy.
12. Connect one end of the chain to the loop using a loop lock.
13. Connect the other end of the chain to the top loop using the other loop lock.
14. Thread the fixture wire and fixture grounding wire through the top loop, threaded pipe and mounting strap.
15. Pull out the source wires from the outlet box. Make wire connections using wire nuts as follows:
 - Connect the smooth-coated wire (marked) from the fixture to the black wire from the power source.
 - Connect the ribbed-coated wire (unmarked) from the fixture to the white wire from the power source.
 - Attach the fixture grounding wire to the mounting strap with the green grounding screw, and then connect it to the house grounding wire with a wire nut.
 Carefully put the wires back into the outlet box.
16. Attach the canopy to the mounting strap, insert the top loop through hole, and then secure it by tightening collar.

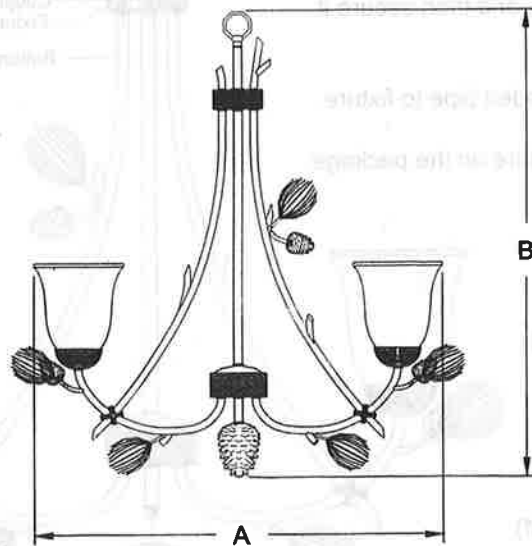
Turn on the power at fuse or circuit box

The following parts are available for re-order if damaged or missing.

Spare Parts List:

Mounting Strap (A)	Mounting Screw (B)	Green Grounding Screw (C)	Wire Nut (D)	Hex Nut (E)	Washer (F)	Glass Shade 9803CC (6PCS)
Threaded Pipe (G)	Top Loop (H)	Canopy (I)	Collar (J)	Loop Lock (K)	Chain (L)	
Pine Needle (M) 5089PN (1PC)	Small Pine Cone (N) 5091PC (1PC)	Big Pine Cone (O) 5090PC (1PC)				

Assembly Kit 5534MM (1SET)



A: 27"

B: 31"